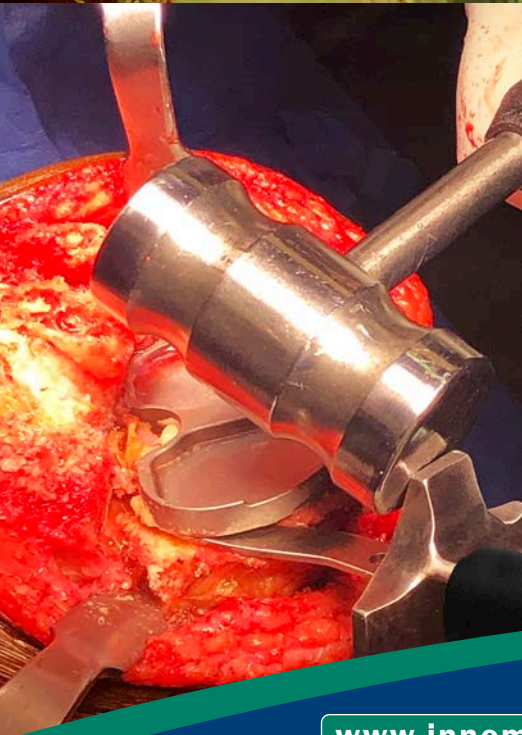
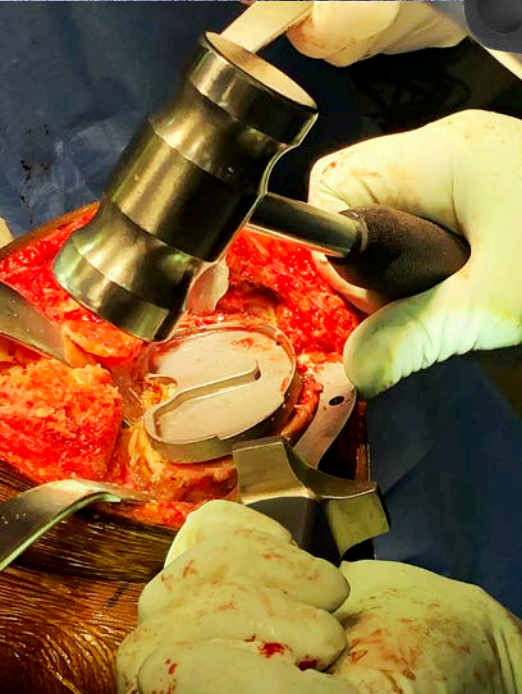


Curved Osteotome for Total Knee Revision

Designed by Morteza Meftah, MD

*Designed to help in the removal of a tibial component,
the curved blade is designed to make contact from multiple angles*



PRODUCT NO'S:

3622 [Standard]

Overall Length: 11" (27,9 cm)
Handle Length: 6" (15,2 cm)
Blade Width: 12 mm
Blade Thickness: 2 mm

3622-01 [Small]

Overall Length: 8" (20,3 cm)
Handle Length: 4.5" (11,4 cm)
Blade Width: 12 mm
Blade Thickness: 2 mm



www.innomed.net

ISO 13485:2016

FREE TRIAL ON MOST INSTRUMENTS



103 Estus Drive, Savannah, GA 31404
info@innomed.net

912.236.0000 Phone
912.236.7766 Fax

Innomed-Europe Tel. +41 41 740 67 74
info@innomed-europe.com

1.800.548.2362

INNOMED