



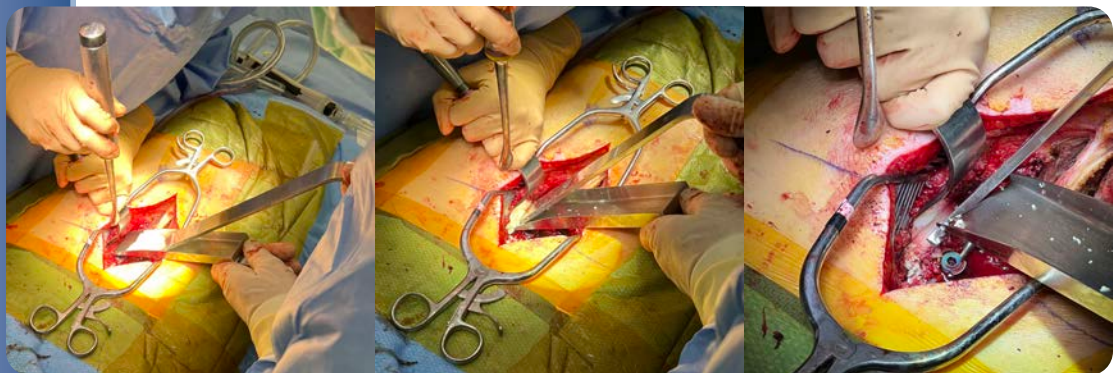
Harvey Lumbar Bone Graft Sled Assembly

Designed by Charles Harvey, DO

Designed to help deliver and tamp morselized bone graft to transverse processes during lumbar spinal fusion



PRODUCT NO'S:	
5083-00	[Harvey Lumbar Bone Graft Assembly]
Set Includes / Available Individually:	
5083-01	[Harvey Lumbar Bone Graft Sled]
Overall Length: 10.625" (27 cm)	
Sled Width: 1.5" (3,8 cm)	
5083-02	[Harvey Lumbar Bone Graft Pusher]
Overall Length: 11.5" (29,2 cm)	
Pusher End Width: 1.3" (3,3 cm)	



www.innomed.net

ISO 13485:2016

FREE TRIAL ON MOST INSTRUMENTS



103 Estus Drive, Savannah, GA 31404
info@innomed.net

912.236.0000 Phone
912.236.7766 Fax

Innomed-Europe Tel. +41 41 740 67 74
info@innomed-europe.com

1.800.548.2362

INNOMED