

Kolbel Self-Retaining Retractor Blades



Wide Blades

36 x 36 mm #T1018 36 x 53 mm #T1019 36 x 68 mm #T1020 36 x 85 mm #T1021



Radiolucent Blade ▶

Carbon fiber PEEK blade is strong, lightweight, completely radiolucent, can be steam sterilized, and also helps to prevent from marring component surfaces.

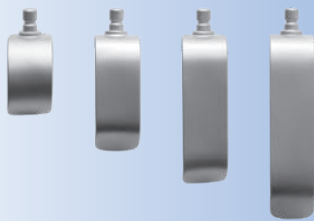
36 x 53 mm
#T1019-R*

MADE EXCLUSIVELY FOR INNOVATED IN SWITZERLAND



Narrow Blades

20 x 36 mm #T1022 20 x 53 mm #T1023 20 x 68 mm #T1024 20 x 85 mm #T1025

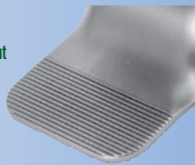


New!
OPTION

Designed with a knurled underside to help prevent the blades from slipping

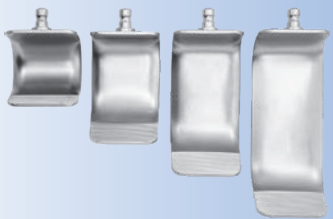
Knurled Blades for Kolbel Self-Retaining Retractors

MADE EXCLUSIVELY FOR INNOVATED IN GERMANY



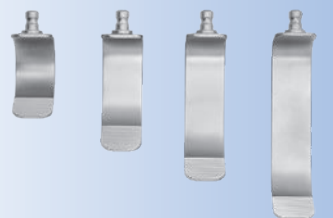
Knurled Wide Blades

36 x 36 mm #T1018-K 36 x 53 mm #T1019-K 36 x 68 mm #T1020-K 36 x 85 mm #T1021-K



Knurled Narrow Blades

20 x 36 mm #T1022-K 20 x 53 mm #T1023-K 20 x 68 mm #T1024-K 20 x 85 mm #T1025-K



Kolbel Self-Retaining Glenoid Retractors

Modified Kolbel Self-Retaining Glenoid Retractor with Hinge

Sets include (1) Retractor, (1) Pair of 36 x 36 mm Blades (T1018-P), and (1) Pair of 36 x 53 mm Blades (T1019-P)



PRODUCT NO'S:

T1014-01 [Set – Standard Handle]

T1014-01-2F [Set – Ergonomic Handle]

Set Includes:

T1015-01 [Retractor – Standard Handle]

Overall Length: 8.25" (21 cm)

Length-to-hinge: 6" (15,2 cm)

Arm Length: 2.25 (5,7 cm)

– OR –

T1015-01-2F [Retractor – Ergonomic Handle]

Overall Length: 9.25" (23,5 cm)

Length-to-hinge: 7" (17,8 cm)

Arm Length: 2.25 (5,7 cm)

T1018-P [Blades–Pair] 36 mm X 36 mm

T1019-P [Blades–Pair] 36 mm X 53 mm



Standard Handle
Retractor Set
#T1014-01

Ergonomic Handle
Retractor Set
#T1014-01-2F

Ergonomic handle for
added control and comfort

Kolbel Self-Retaining Glenoid Retractor

Sets include (1) Retractor, (1) Pair of 36 x 36 mm Blades (T1018-P), and (1) Pair of 36 x 53 mm Blades (T1019-P)



PRODUCT NO'S:

T1014 [Set – Standard Handle]

T1014-2F [Set – Ergonomic Handle]

Set Includes:

T1015 [Retractor – Standard Handle]

Overall Length: 8.25" (21 cm)

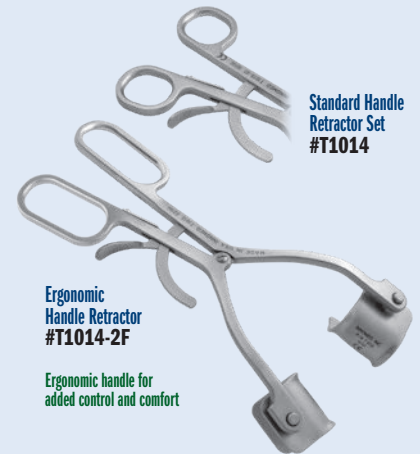
– OR –

T1015-2F [Retractor – Ergonomic Handle]

Overall Length: 9.25" (23,5 cm)

T1018-P [Blades–Pair] 36 mm X 36 mm

T1019-P [Blades–Pair] 36 mm X 53 mm



Standard Handle
Retractor Set
#T1014

Ergonomic
Handle Retractor
#T1014-2F

Ergonomic handle for
added control and comfort

Kolbel Self-Retaining Glenoid Retractor with Center Blade

Center blade can be reversed for shallow or deep retraction

Sets include (1) Retractor, (1) Pair of 36 x 36 mm Blades (T1018-P), and (1) Pair of 36 x 53 mm Blades (T1019-P)



PRODUCT NO'S:

T1050 [Set – Standard Handle]

T1050-2F [Set – Ergonomic Handle]

Set Includes:

T1050-01 [Retractor – Standard Handle]

Overall Length: 8" (20,3 cm)

– OR –

T1050-01-2F [Retractor – Ergonomic Handle]

Overall Length: 9" (22,9 cm)

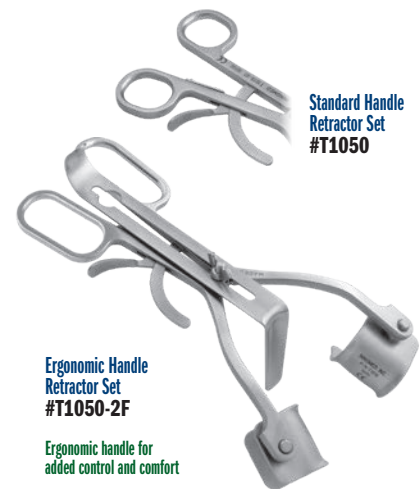
T1050-02 [Center Blade]

Length-to-bend: 6.25" (15,9 cm)

Depth: 2.5" (6,4 cm)

T1018-P [Blades–Pair] 36 mm X 36 mm

T1019-P [Blades–Pair] 36 mm X 53 mm



Standard Handle
Retractor Set
#T1050

Ergonomic Handle
Retractor Set
#T1050-2F

Ergonomic handle for
added control and comfort

– See Other Side for More Kolbel Retractors –

www.innomed.net



ISO 13485:2016

FREE TRIAL ON MOST INSTRUMENTS

INNOMED



103 Estus Drive, Savannah, GA 31404
info@innomed.net

912.236.0000 Phone
912.236.7766 Fax

Innomed-Europe Tel. +41 41 740 67 74
info@innomed-europe.com

1.800.548.2362

© 2025 Innomed, Inc.

Kolbel Self-Retaining Retractor Blades



Wide Blades

36 x 36 mm #T1018 36 x 53 mm #T1019 36 x 68 mm #T1020 36 x 85 mm #T1021



Radiolucent Blade ▶

Carbon fiber PEEK blade is strong, lightweight, completely radiolucent, can be steam sterilized, and also helps to prevent from marring component surfaces.

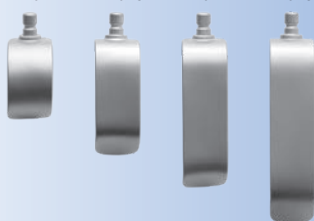
36 x 53 mm
#T1019-R*

*
MADE EXCLUSIVELY
FOR HOSPITALS IN
SWITZERLAND



Narrow Blades

20 x 36 mm #T1022 20 x 53 mm #T1023 20 x 68 mm #T1024 20 x 85 mm #T1025



New!
OPTION

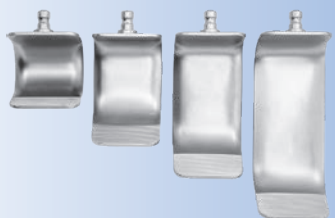
Designed with a knurled underside to help prevent the blades from slipping

Knurled Blades for Kolbel Self-Retaining Retractors

MADE EXCLUSIVELY
FOR HOSPITALS IN
GERMANY

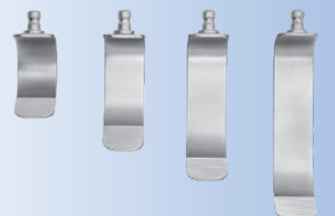
Knurled Wide Blades

36 x 36 mm #T1018-K 36 x 53 mm #T1019-K 36 x 68 mm #T1020-K 36 x 85 mm #T1021-K



Knurled Narrow Blades

20 x 36 mm #T1022-K 20 x 53 mm #T1023-K 20 x 68 mm #T1024-K 20 x 85 mm #T1025-K



Kolbel Self-Retaining Glenoid Retractor with Hinge and Double Ergonomic Handle

Set includes (1) Retractor, (1) Pair of 36 x 36 mm Blades (T1018-P), and (1) Pair of 36 x 53 mm Blades (T1019-P)

PRODUCT NO'S:

T1016-01 [Set]

Set Includes:

T1016-01-2F [Retractor]

Overall Length: 9.25" (23,5 cm)

Length-to-hinge: 7" (17,8 cm)

Arm Length: 2.25 (5,7 cm)

T1018-P [Blades-Pair] 36 mm X 36 mm

T1019-P [Blades-Pair] 36 mm X 53 mm



Retractor Set
#T1016-01

Ergonomic handle for
added control and comfort

Kolbel Self-Retaining Retractor

Set includes (1) Retractor, (1) Pair of 36 x 36 mm Blades (T1018-P), and (1) Pair of 36 x 53 mm Blades (T1019-P)

PRODUCT NO'S:

T1016 [Set]

Set Includes:

T1017 [Retractor]

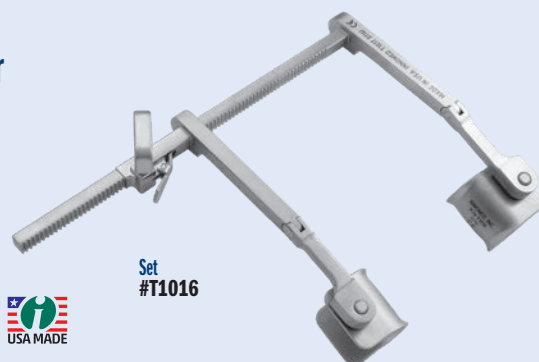
Overall Length: 8.25" (21 cm)

Arm Length: 6.125" (15,6 cm)

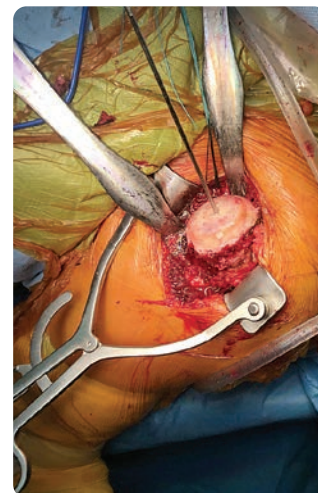
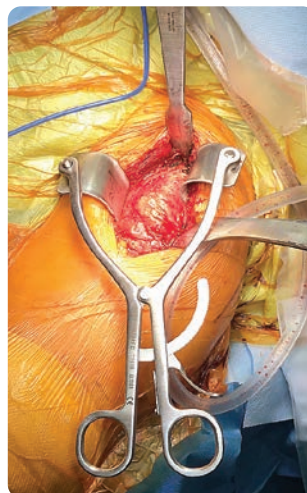
Arm Length-to-hinge: 3" (7,6 cm)

T1018-P [Blades-Pair] 36 mm X 36 mm

T1019-P [Blades-Pair] 36 mm X 53 mm



Set
#T1016



— See Other Side for More Kolbel Retractors —

www.innomed.net



ISO 13485:2016

FREE TRIAL ON MOST INSTRUMENTS



103 Estus Drive, Savannah, GA 31404
info@innomed.net

912.236.0000 Phone
912.236.7766 Fax

Innomed-Europe Tel. +41 41 740 67 74
info@innomed-europe.com

1.800.548.2362

INNOMED

