

# Ortho Self-Retaining Retractors

*Used to separate the femur and tibia during knee replacement procedures, where the measuring scale design can help to balance ligaments*

- ▶ Features a no-teeth design, available with flat or serrated outside blades
- ▶ Can also be used for spine surgery where the measuring scale can be used to help assess the size of an opening – useful in procedures to help determine bone graft needs
- ▶ Also useful in foot & ankle surgery

## Standard Handle

### PRODUCT NO'S:

#### Flat Outside Pads

#### 1843 [Medium Flat]

Overall Length: 9.25" (23,5 cm)

Blade Width: 10 mm

Blade Thickness: 1.68 mm

#### 1842 [Small Flat]

Overall Length: 6.5" (16,5 cm)

Blade Width: 7 mm

Blade Thickness: 1.68 mm



MADE EXCLUSIVELY  
FOR INNOMED IN  
GERMANY

### PRODUCT NO'S:

#### Serrated Outside Pads

#### 1843-01 [Medium Serrated]

Overall Length: 9.25" (23,5 cm)

Blade Width: 10 mm

Blade Thickness: 1.68 mm

#### 1842-01 [Small Serrated]

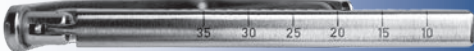
Overall Length: 6.5" (16,5 cm)

Blade Width: 7 mm

Blade Thickness: 1.68 mm



Measuring scale in millimeters on the spreader handle



*Designed with the grip closer together for easier gripping and to help reduce hand fatigue*

## Small Grip Handle

### PRODUCT NO'S:

#### Serrated Outside Pads

#### 1842-01-SG [Small Serrated, Small Grip]

Overall Length: 6.5" (16,5 cm)

Blade Width: 7 mm

Blade Thickness: 1.68 mm



#### \* Accuracy Statement for devices with a measuring function:

Devices with a measuring function are considered non-critical, non-calibrated, and are intended for reference-only measurements. While it provides a helpful visual guide for relative measurements, it is not calibrated to specific precision standards. Measurements taken with this device should not be considered accurate enough for critical applications requiring strict dimensional tolerances. General manufacturing tolerances of  $\pm 1\%$  at each graduation, or 2% of the full scale apply, but no conformance qualifications are provided or implied.

[www.innomed.net](http://www.innomed.net)



ISO 13485:2016

FREE TRIAL ON MOST INSTRUMENTS

**INNOMED**



103 Estus Drive, Savannah, GA 31404  
info@innomed.net

912.236.0000 Phone  
912.236.7766 Fax

Innomed-Europe Tel. +41 41 740 67 74  
info@innomed-europe.com

1.800.548.2362

© 2025 Innomed, Inc.