



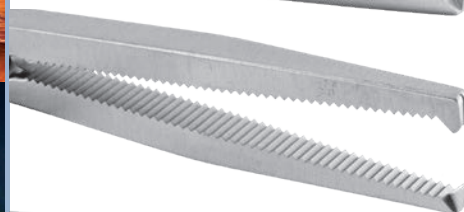
Powers Modified Kocher Clamp

Designed by Mark Powers, MD

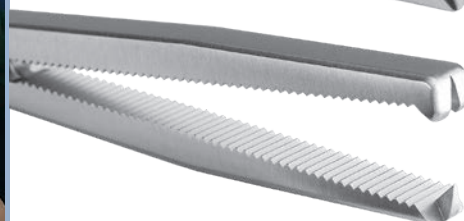
Heavier design allows for a firmer grasping of bone and soft tissues



**Tapered Jaw
#1813**



**Tapered Narrow Jaw
#1813-01***



**Square Jaw
#1814**

MADE EXCLUSIVELY
FOR INNOMED IN
GERMANY

*  **USA MADE**

PRODUCT NO'S:

1813 [Tapered Jaw]
Overall Length: 8.25" (21 cm)
Jaw Length: 2.5" (6,4 cm)
Jaw at End: 5.2 mm x 4.1 mm

1813-01* [Tapered Narrow Jaw]
Overall Length: 8.25" (21 cm)
Jaw Length: 2.5" (6,4 cm)
Jaw at End: 5.2 mm x 3 mm

1814 [Square Jaw]
Overall Length: 8.25" (21 cm)
Jaw Length: 2.5" (6,4 cm)
Jaw at End: 6.5 mm x 5 mm

www.innomed.net



ISO 13485:2016

FREE TRIAL ON MOST INSTRUMENTS



103 Estus Drive, Savannah, GA 31404
info@innomed.net

912.236.0000 Phone
912.236.7766 Fax

Innomed-Europe Tel. +41 41 740 67 74
info@innomed-europe.com

1.800.548.2362

INNOMED 