

# Ruler with 45° Angle Handle

Designed by Richard A. Sanders, MD

*Useful for measuring distances in small deep incisions*

Ideal for measuring the distance from the lesser trochanter to the center of the trial femoral head during femoral sizing.

## PRODUCT NO:

**1430**

Handle Length: 5" (12,7 cm)

Ruler Dimensions: 2.5" x .5" (6,4 cm x 1,3 cm)



# Ruler with Right Angle Handle

*Designed to be used to measure the femoral head/neck length*

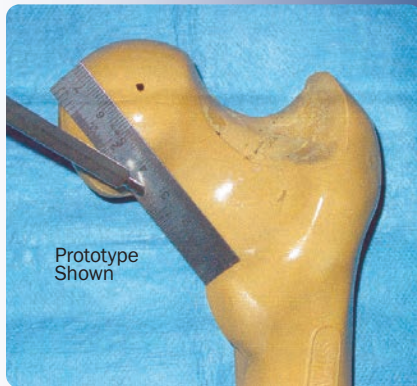
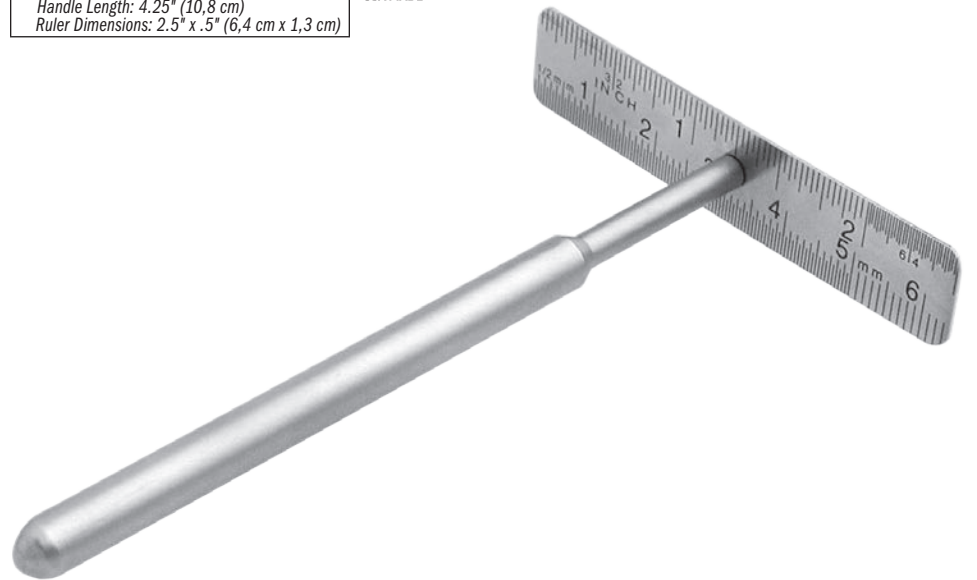
The ruler is designed to be used to measure the femoral head/neck length. Very helpful in minimally invasive surgery.

## PRODUCT NO:

**1450**

Handle Length: 4.25" (10,8 cm)

Ruler Dimensions: 2.5" x .5" (6,4 cm x 1,3 cm)



Prototype  
Shown

## \* Accuracy Statement for devices with a measuring function:

Devices with a measuring function are considered non-critical, non-calibrated, and are intended for reference-only measurements. While it provides a helpful visual guide for relative measurements, it is not calibrated to specific precision standards. Measurements taken with this device should not be considered accurate enough for critical applications requiring strict dimensional tolerances. General manufacturing tolerances of  $\pm 1\%$  at each graduation, or 2% of the full scale apply, but no conformance qualifications are provided or implied.

[www.innomed.net](http://www.innomed.net)



ISO 13485:2016

FREE TRIAL ON MOST INSTRUMENTS

**INNOMED**



103 Estus Drive, Savannah, GA 31404  
info@innomed.net

912.236.0000 Phone  
912.236.7766 Fax

Innomed-Europe Tel. +41 41 740 67 74  
info@innomed-europe.com

1.800.548.2362