

## Standard Handle

### PRODUCT NO'S:

**1875** [Large – Grooved Pads]  
Overall Length: 9.25" (23,5 cm)  
Pads: 22 mm x 13 mm  
Opens to: 50 mm

**1875-D** [Large – Diamond Cut Pads]  
Overall Length: 9.25" (23,5 cm)  
Pads: 22 mm x 13 mm  
Opens to: 50 mm

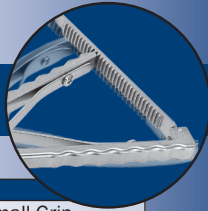
**1876** [Small – Grooved Pads]  
Overall Length: 7" (17,8 cm)  
Pads: 22 mm x 13 mm  
Opens to: 35 mm

**1876-D** [Small – Diamond Cut Pads]  
Overall Length: 7" (17,8 cm)  
Pads: 22 mm x 13 mm  
Opens to: 35 mm



MADE EXCLUSIVELY  
FOR INNOMED IN  
G E R M A N Y

## Small Grip Handle



### PRODUCT NO:

**1876-SG** [Small with Small Grip  
and Grooved Pads]  
Overall Length: 7" (17,8 cm)  
Pads: 22 mm x 13 mm  
Opens to: 35 mm



## Locking Mechanism

### PRODUCT NO'S:

**1875-LR** [Large – Grooved Pads  
with Locking Mechanism]  
Overall Length: 9.625" (24,4 cm)  
Pads: 22 mm x 13 mm  
Opens to: 45 mm

**1876-LR** [Small – Grooved Pads  
with Locking Mechanism]  
Overall Length: 7" (17,8 cm)  
Pads: 22 mm x 13 mm  
Opens to: 35 mm



# Lombardi Femoral Tibial Spreader

Designed by Adolph V. Lombardi Jr., MD

*Thin pads help to separate the femur and tibia during total knee procedures*



*The scale on the spreader handle helps to accurately gauge the gap, and makes it possible for two spreaders to be used to assist in balancing ligaments.*

Large – Grooved Pads  
**#1875**

Large – Diamond Cut Pads  
**#1875-D**  
(Not Shown)



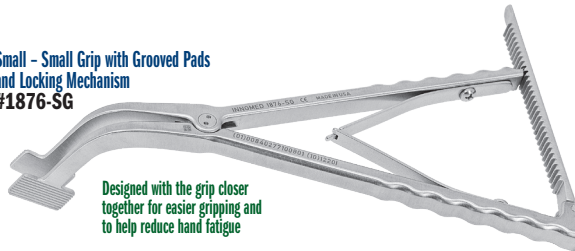
Small – Grooved Pads  
**#1876**

Small – Diamond Cut Pads  
**#1876-D**  
(Not Shown)



Small – Small Grip with Grooved Pads  
and Locking Mechanism  
**#1876-SG**

*Designed with the grip closer together for easier gripping and to help reduce hand fatigue*

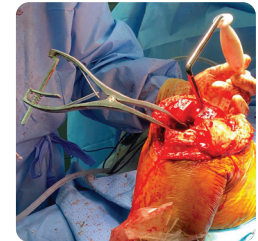


Large – Grooved Pads  
with Locking Mechanism  
**#1875-LR**



*Locking ratchet mechanism helps prevent accidental release, and provides for controlled adjustment and easy release.*

Small – Grooved Pads  
with Locking Mechanism  
**#1876-LR**



### Reference Measurement Statement (Non-Measuring Function)

This device is not intended to provide quantitative measurements and does not incorporate a measuring function as defined under Regulation (EU) 2017/745 (MDR). Any scales, markings, or visual indicators present on the device are provided solely for reference and orientation purposes to support general use. These indicators are not calibrated against traceable standards and have not been validated for accuracy, precision, or repeatability. Accordingly, values derived from these markings shall be considered approximate only and must not be used where accurate or traceable measurements are required for clinical decision-making, diagnosis, or other applications requiring defined metrological performance. Users shall rely only on devices specifically intended and validated for measurement when quantitative accuracy is required.

[www.innomed.net](http://www.innomed.net)



FREE TRIAL ON MOST INSTRUMENTS

# INNOMED

ISO 13485:2016



103 Estus Drive, Savannah, GA 31404  
info@innomed.net

912.236.0000 Phone  
912.236.7766 Fax

Innomed-Europe Tel. +41 41 740 67 74  
info@innomed-europe.com

1.800.548.2362